




UPPER HOUSE

BY ELLINGTON





Welcome to the intersection of wellness and urbanism

The modernist apartments at Upper House by Ellington are centred around a holistic design philosophy. Maximising access to a wealth of facilities, offering expansive views and bringing residents closer together, it is a vibrant ecosystem where wellness, and urbanism can co-exist.

YOUNG AND WELL CONNECTED

A burgeoning social hub just
minutes from the city

Jumeirah Lake Towers stems from magnificent urbanist lakes, pristine tower blocks, and peaceful walkways and bridges. The location is well connected to the city centre but removes it from crowded areas. This allows room for quiet parks, lively restaurants, and other hidden gems to be found.



DRIVING DISTANCES

02
MINUTES
Jumeirah Lakes Park

02
MINUTES
DMCC Metro Station

07
MINUTES
Montgomerie Golf Club

08
MINUTES
Emirates Golf Club

08
MINUTES
Ain Dubai

13
MINUTES
Mall of the Emirates

15
MINUTES
Palm Jumeirah

17
MINUTES
Burj Al Arab

19
MINUTES
Museum of the Future

20
MINUTES
Dubai Mall & Burj Khalifa

23
MINUTES
Dubai International Financial Centre

25
MINUTES
Dubai International Airport

27
MINUTES
Al Maktoum International Airport





UPPER HOUSE
BY ELLINGTON

LOBBY
RECEPTION

MAKE AN UPPER HOUSE ENTRANCE

From the shaded hotel-style entrance, a double-height atrium space, a monolithic reception counter, and a beautifully furnished lounge await. The space is open and impressive, yet warm and homely. It has an ambiance that welcomes residents and their guests to a comfortable area suited to socialising, working, and relaxing.



LOBBY LOUNGE

Connecting nature with nurture

A thoughtful collection of
amenities and on-site facilities
created solely for you.



- Sky Spa
- Interactive Fitness
- Climbing Walls
- Aerial Yoga
- Sky Fitness Club
- Private cinema
- Podcast studio
- Skate Park
- Arcade Room
- Artist in Residence
- Basketball
- Padel Court
- Outdoor Yoga
- Infinity Pool
- Club Lounge
- Workstations
- BBQ Station
- Kids' play area
- Bicycle workshop
- E-Vehicle charging stations
- Lobby and lounge
- Drop-off stations



THE PODIUM



ELEVATE
YOUR
WAY OF LIFE

An expanse of sports, well-being, and relaxation, above street level. Residents have exclusive access to rare moments of space and nature close moments from the city centre. It lifts the energy of the building with dedicated areas for exercise, sports, relaxation and an infinity pool looking out toward the coastline.





PODCAST ROOM



Space to welcome nature

Through floor-to-ceiling windows and open living spaces, the living rooms at Upper House navigate natural light throughout the entire apartment. The space seamlessly intertwines with the building's flowing exteriors to create a new kind of energy for those who call it home.





CLUBHOUSE



KIDS PLAY
AREA



Fitness
IS NOT A DESTINATION
IT IS A WAY OF LIFE

INNER BALANCE
AT MID-LEVEL



A celebration of wellness

Under a double glass room hosting the three shared hubs dedicated to residents' health and well-being. These include a gym featuring a climbing wall and aerial yoga, as well as an innovative interactive fitness room to reinvigorate your workout with a new perspective.



INTERACTIVE
FITNESS



WELLNESS
SPA

PENTHOUSE
FOR
EVERYONE



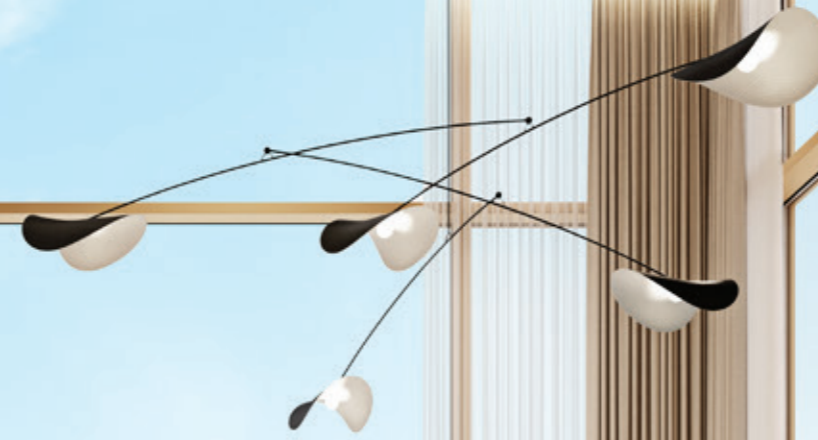


A DIRECT
CONNECTION
TO NATURE

Welcome to a lively social hub with breathtaking views over the pool decking, across the city, and towards the coastline. The Upper House Club Lounge invites residents to explore a vibrant space with a games room, plush furnishing, a pantry, and a peaceful library area to relax with a book and take in those impressive views. For evenings of entertainment with friends and family, there is also a bookable for public and private gatherings.



MULTI-PURPOSE
ROOM





CINEMA ROOM

RECORD LOUNGE





20			
19			
18			
17			
16			
18			
BULL			



ARCADE ROOM

APARTMENTS



From the curved stylised balconies and floor-to-ceiling windows, residents can enjoy panoramic views from their modern, urban-ready homes. They are comprised of a clean simple materials palette, beautifully detailed and framed. Subtle champagne accents, textures, and defining lines evoke Ellington's trademark quality and take inspiration from the movement of water, light, and wind.

KITCHENS

Upper House kitchens are exemplary of the resident-first design that Ellington are renowned for. From usability and storage to smart planning solutions like the pop-up pantry that becomes an extension to your kitchen to store or display easily accessible appliances.





LIVING ROOMS

BEDROOMS



A new awakening

Bedrooms are a soft and intimate retreat from the open and airy spaces of Upper House. They are a place to feel belonging and relaxation while waking up to the sunrise and watching the sunset at the end of another day.



BATHROOMS

POWDER ROOMS



A spa-like experience

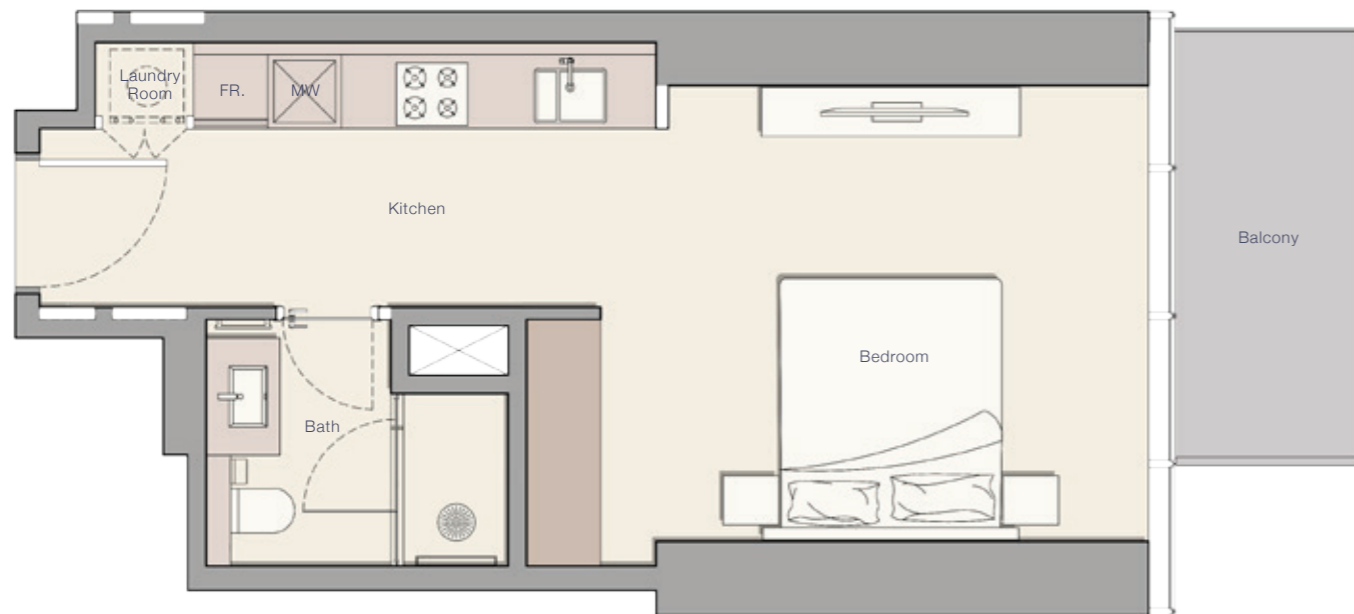
In addition to the practicality and seamless functionality of the bathrooms and powder rooms at Upper House, there is a quality that allows for moments of complete revitalisation for mind and body. Among warm porcelain tiles and countertops, your bathing rituals become so much more meaningful than a daily routine.



FLOOR PLANS

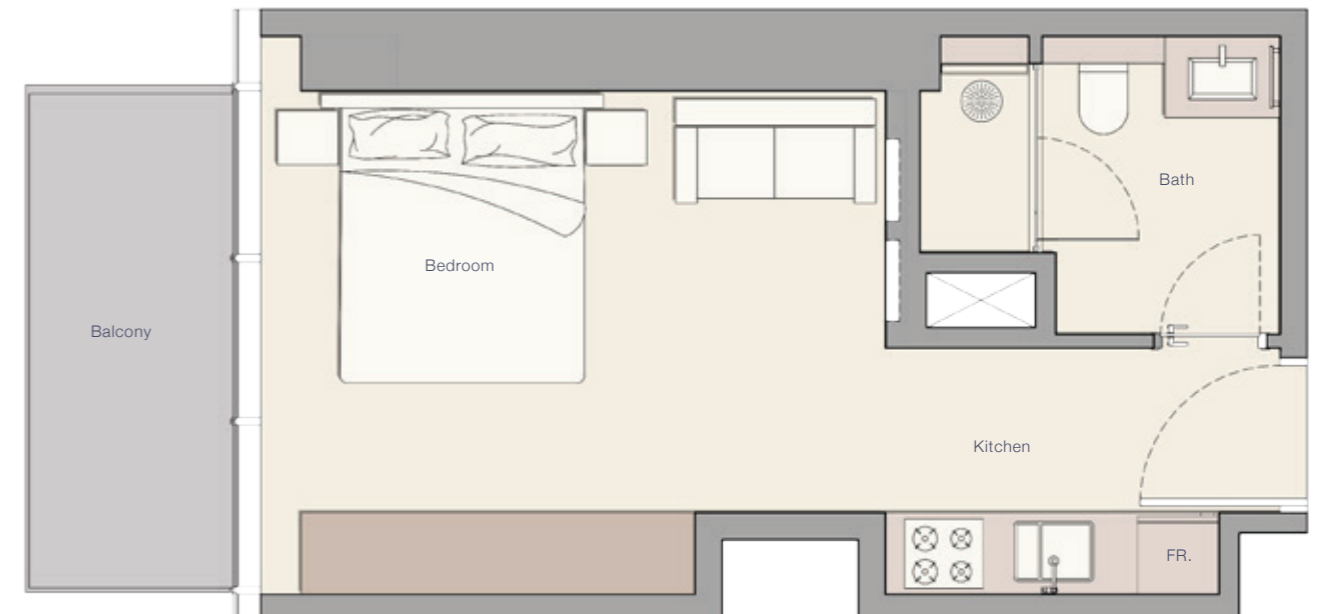
STUDIO TYPE A

Internal Living Area	402.68	sq.ft
Outdoor Living Area	58.66	sq.ft
Total Living Area	461.34	sq.ft

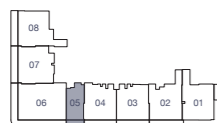


STUDIO TYPE B

Internal Living Area	340.35	sq.ft
Outdoor Living Area	61.25	sq.ft
Total Living Area	401.60	sq.ft



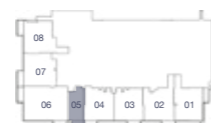
Podium Level 2



Podium Level 3-5



Level 1



Level 2



Level 3-15



Level 2



Level 3-15



Level 16



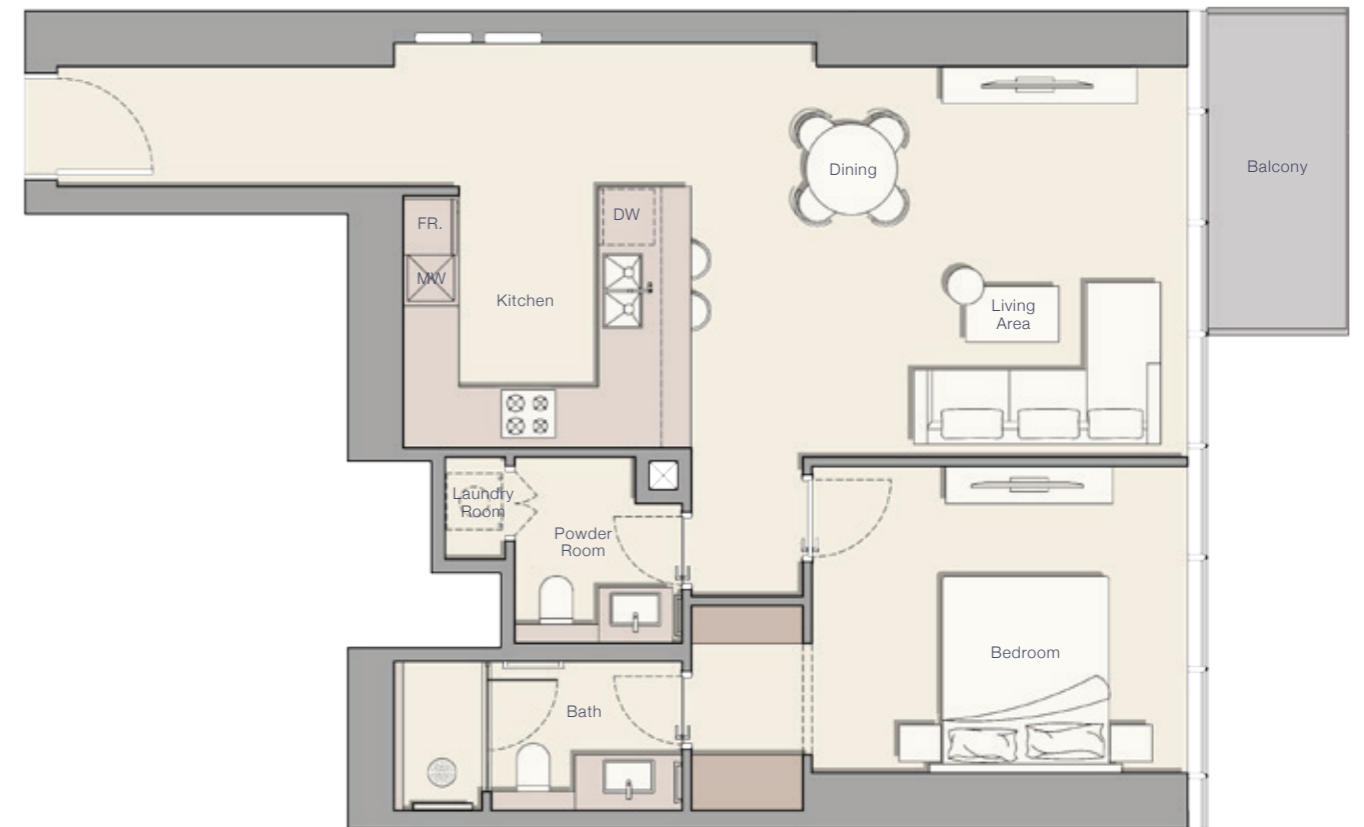
1 BEDROOM TYPE A

Internal Living Area 830.11 sq.ft
 Outdoor Living Area 66.09 sq.ft
 Total Living Area 896.20 sq.ft



1 BEDROOM TYPE B

Internal Living Area 852.29 sq.ft
 Outdoor Living Area 57.59 sq.ft
 Total Living Area 909.87 sq.ft



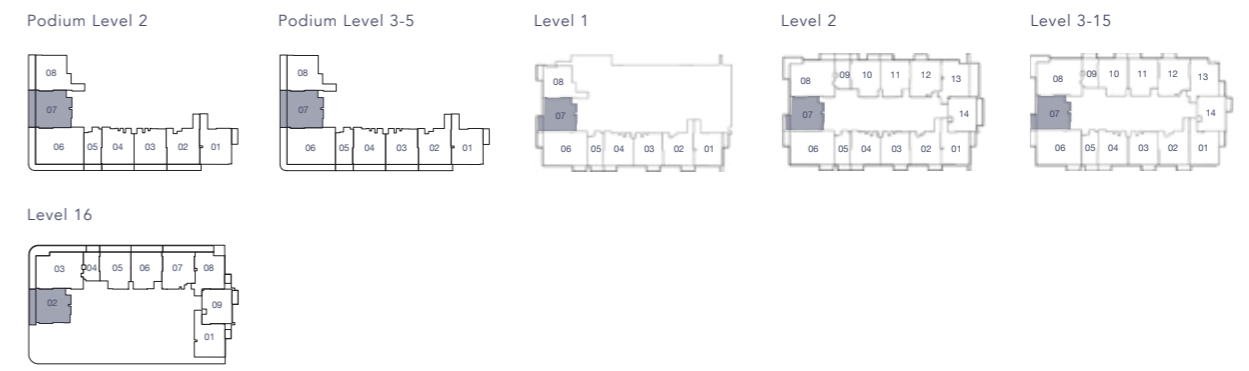
1 BEDROOM TYPE C

Internal Living Area 766.28 sq.ft
 Outdoor Living Area 57.91 sq.ft
 Total Living Area 824.19 sq.ft



1 BEDROOM TYPE D

Internal Living Area 865.53 sq.ft
 Outdoor Living Area 79.33 sq.ft
 Total Living Area 944.86 sq.ft



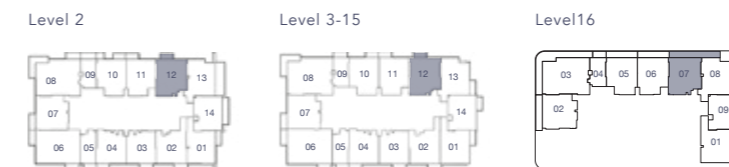
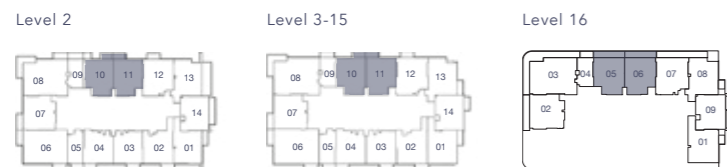
1 BEDROOM TYPE E

Internal Living Area	798.47	sq.ft
Outdoor Living Area	56.62	sq.ft
Total Living Area	855.09	sq.ft



1 BEDROOM TYPE F

Internal Living Area	858.74	sq.ft
Outdoor Living Area	59.63	sq.ft
Total Living Area	918.38	sq.ft



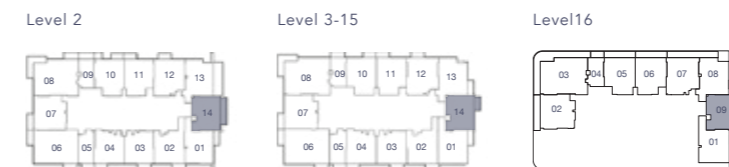
1 BEDROOM TYPE G

Internal Living Area	836.79	sq.ft
Outdoor Living Area	69.64	sq.ft
Total Living Area	906.43	sq.ft



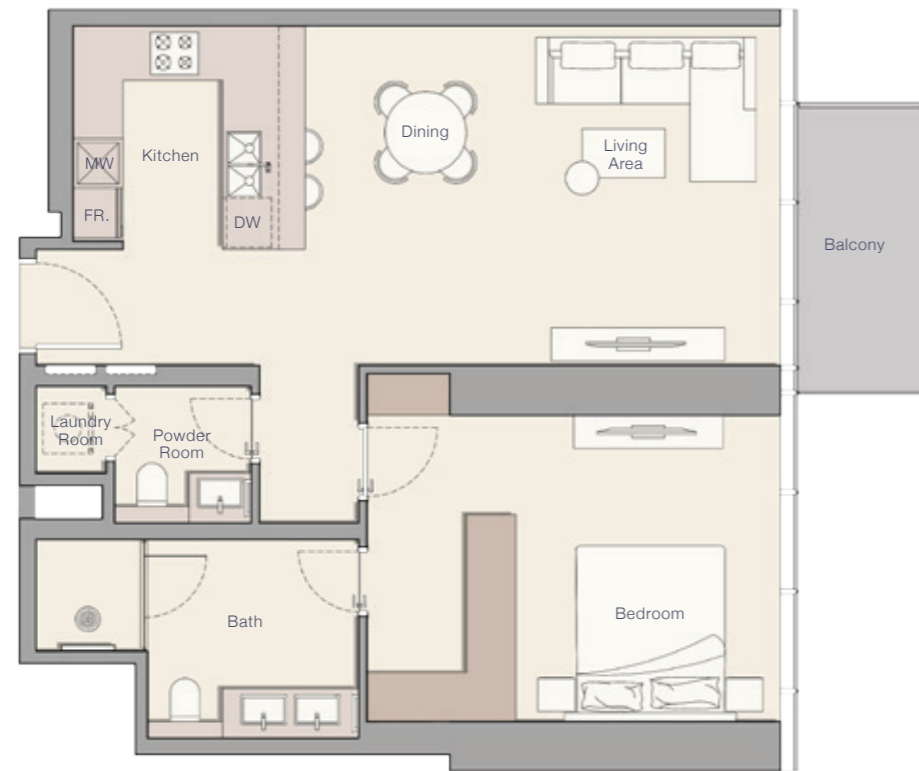
1 BEDROOM TYPE H

Internal Living Area	758.32	sq.ft
Outdoor Living Area	60.71	sq.ft
Total Living Area	819.03	sq.ft



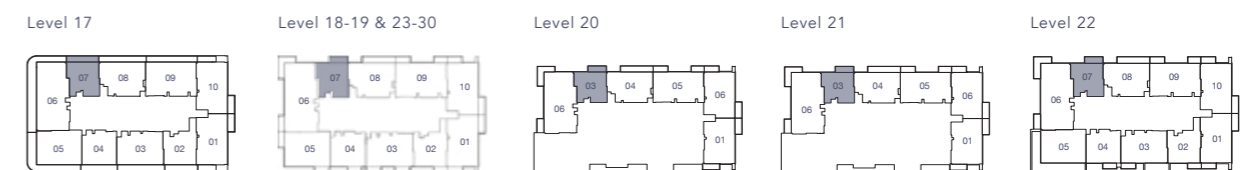
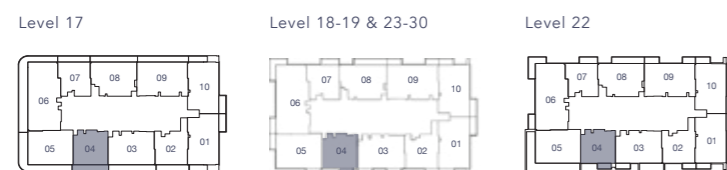
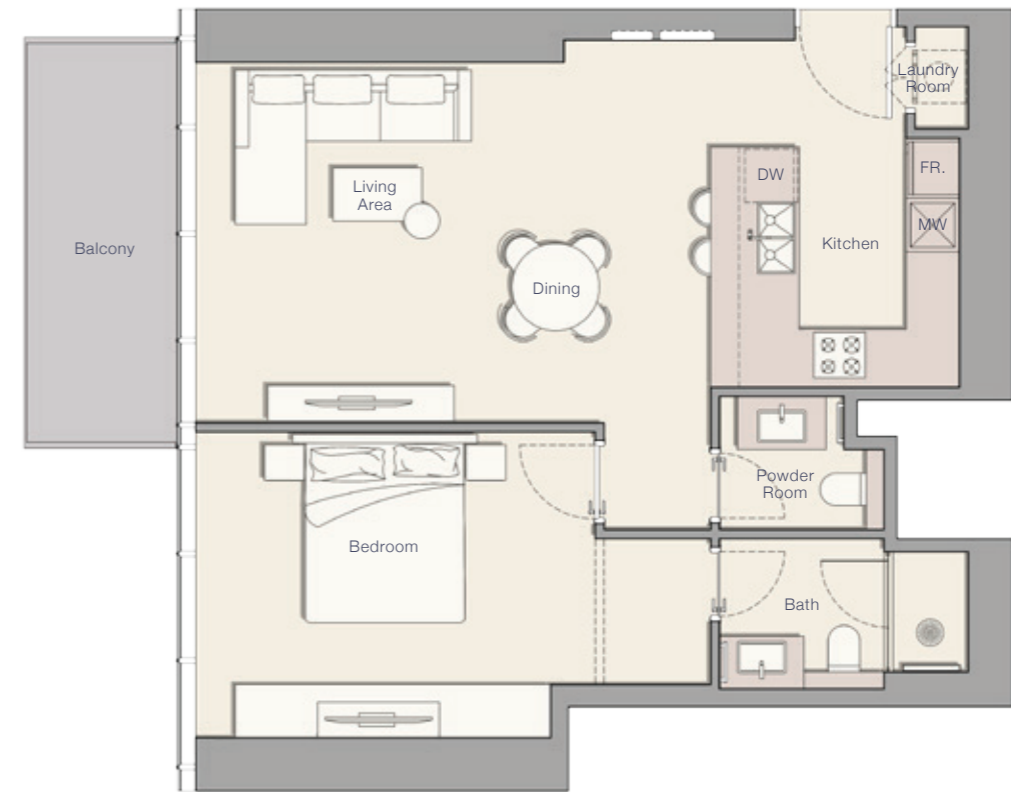
1 BEDROOM TYPE I

Internal Living Area	845.07	sq.ft
Outdoor Living Area	57.91	sq.ft
Total Living Area	902.98	sq.ft



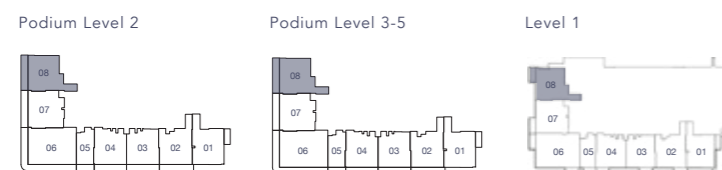
1 BEDROOM TYPE J

Internal Living Area	754.01	sq.ft
Outdoor Living Area	85.79	sq.ft
Total Living Area	839.80	sq.ft



1 BEDROOM TYPE K

Internal Living Area	844.86	sq.ft
Outdoor Living Area	76.75	sq.ft
Total Living Area	921.61	sq.ft



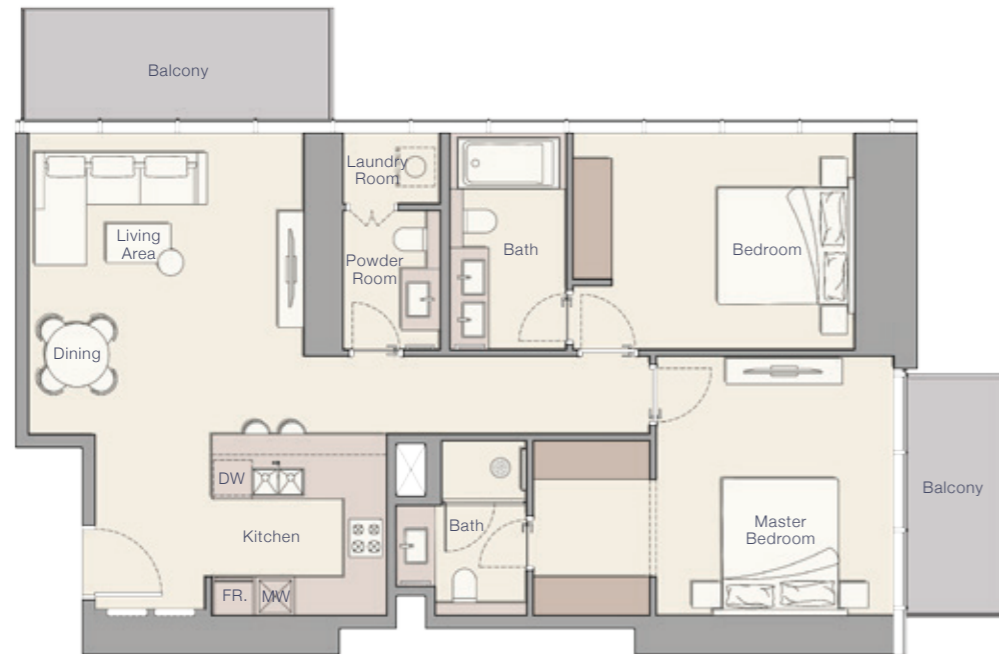
2 BEDROOM TYPE A

Internal Living Area	1,097.06	sq.ft
Outdoor Living Area	139.50	sq.ft
Total Living Area	1,236.56	sq.ft



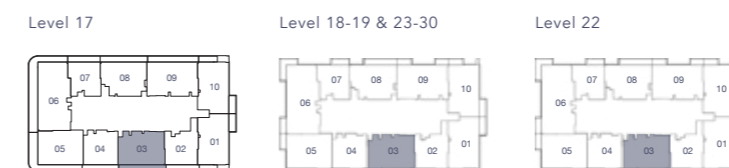
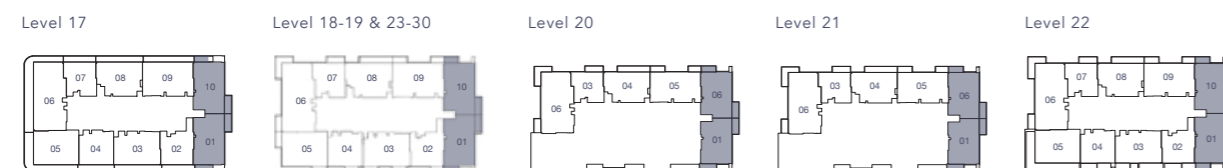
2 BEDROOM TYPE B

Internal Living Area	1,107.82	sq.ft
Outdoor Living Area	151.56	sq.ft
Total Living Area	1,259.38	sq.ft



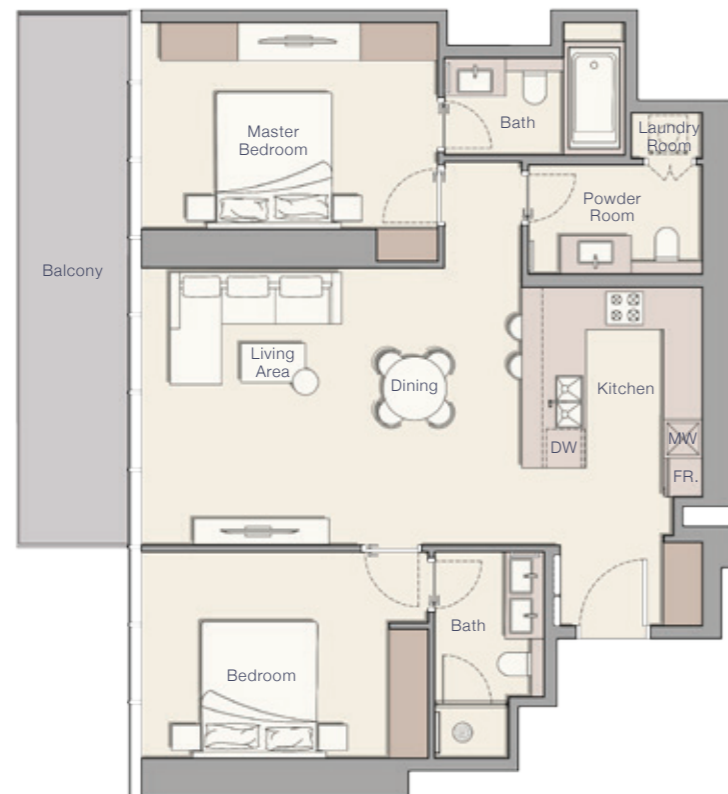
2 BEDROOM TYPE C

Internal Living Area	1,103.09	sq.ft
Outdoor Living Area	122.60	sq.ft
Total Living Area	1,225.69	sq.ft



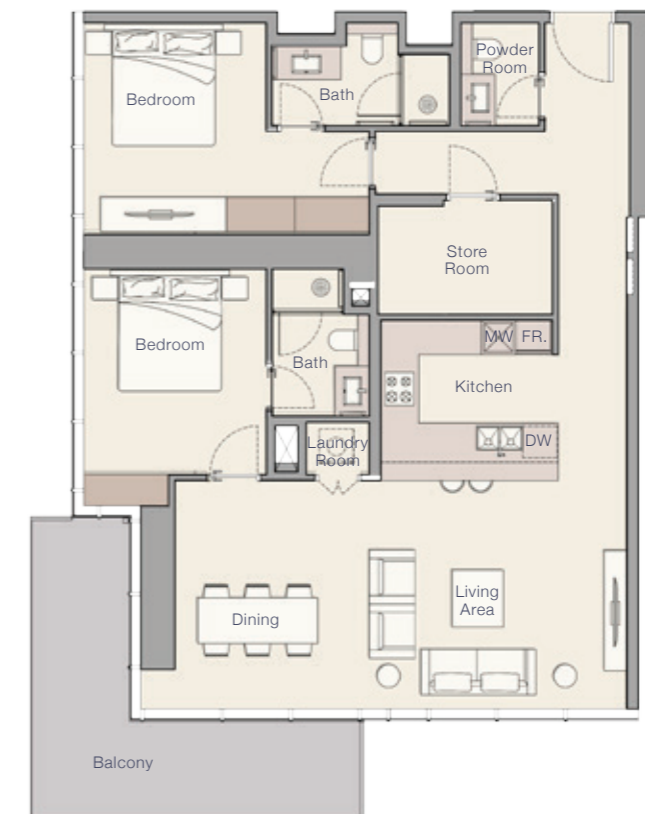
2 BEDROOM TYPE D

Internal Living Area	1,048.08	sq.ft
Outdoor Living Area	155.32	sq.ft
Total Living Area	1,204.41	sq.ft



2 BEDROOM + MAIDS TYPE A

Internal Living Area	1,247.11	sq.ft
Outdoor Living Area	175.24	sq.ft
Total Living Area	1,422.34	sq.ft



Level 17



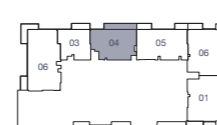
Level 18-19 & 23-30



Level 20



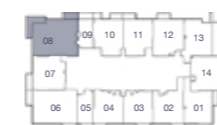
Level 21



Level 22



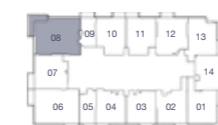
Level 2



Level 3-15

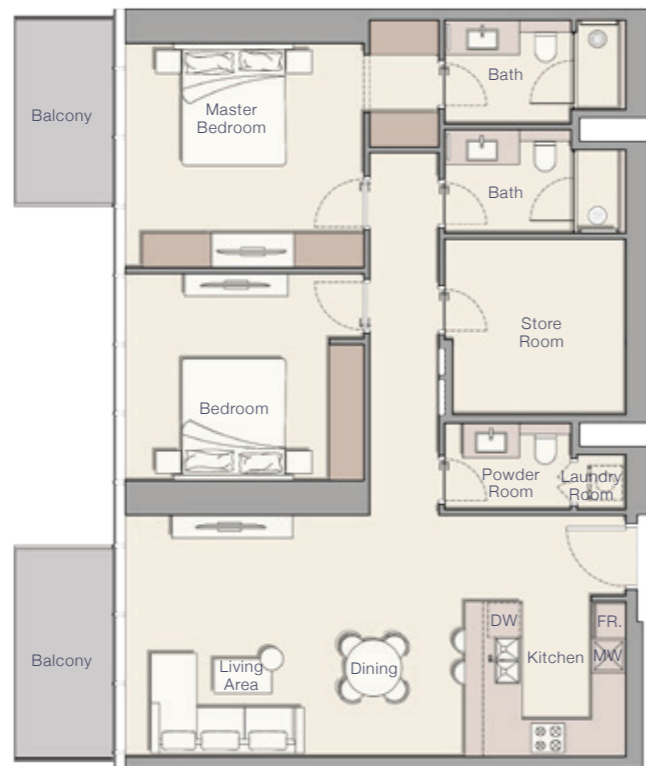


Level 16



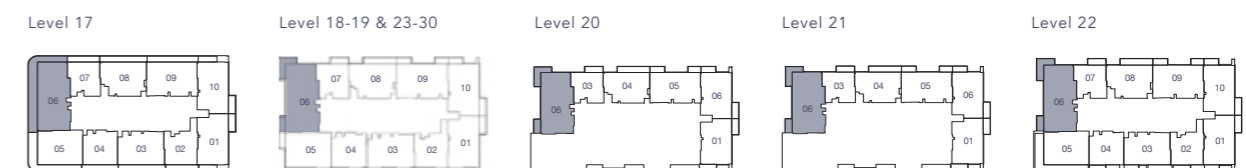
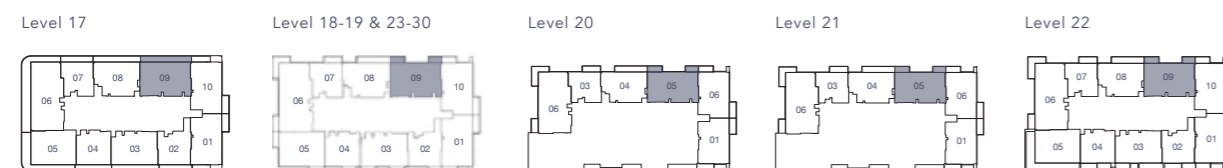
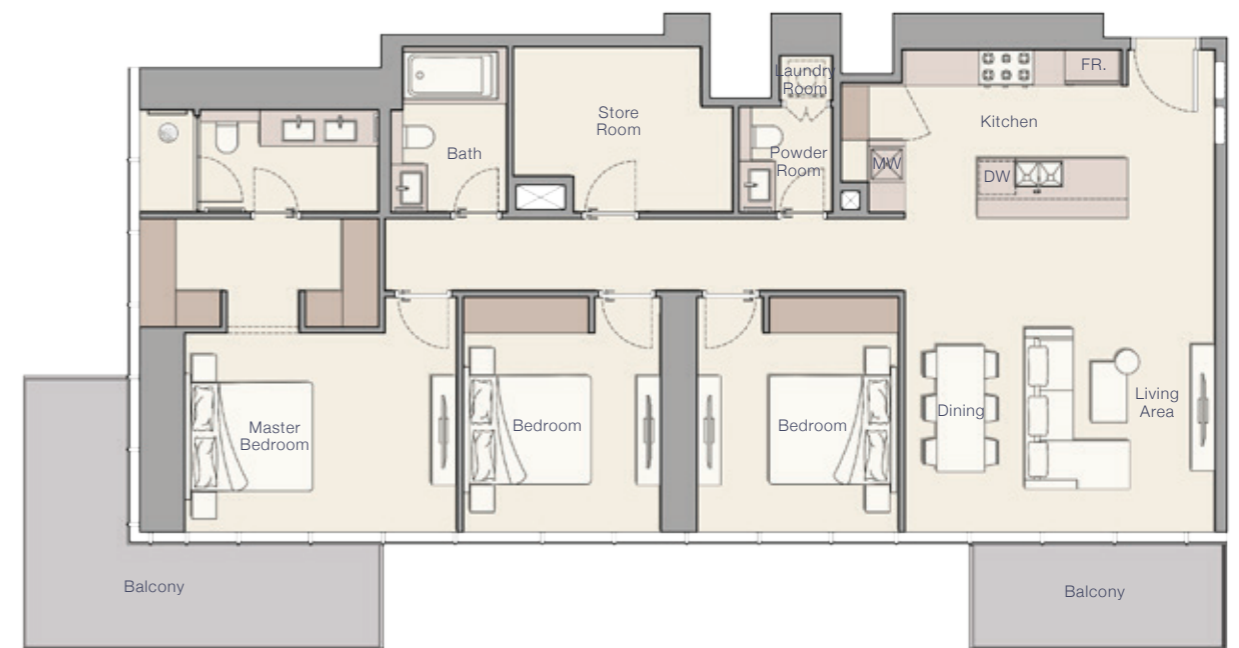
2 BEDROOM + MAID TYPE B

Internal Living Area	1,248.29	sq.ft
Outdoor Living Area	130.89	sq.ft
Total Living Area	1,379.18	sq.ft



3 BEDROOM TYPE A

Internal Living Area	1,581.33	sq.ft
Outdoor Living Area	242.08	sq.ft
Total Living Area	1,823.41	sq.ft



Our buildings are cooled and heated with low noise energy-efficient FCUs, with a system that collects condensation for irrigation. Our fitness centres are equipped with eco-conscious facilities. Our parking spaces accommodate charging points for electric vehicles. As our developments continue to expand across Dubai, our focus is on going above and beyond best practices to support environmentally friendly living with beautiful design.



